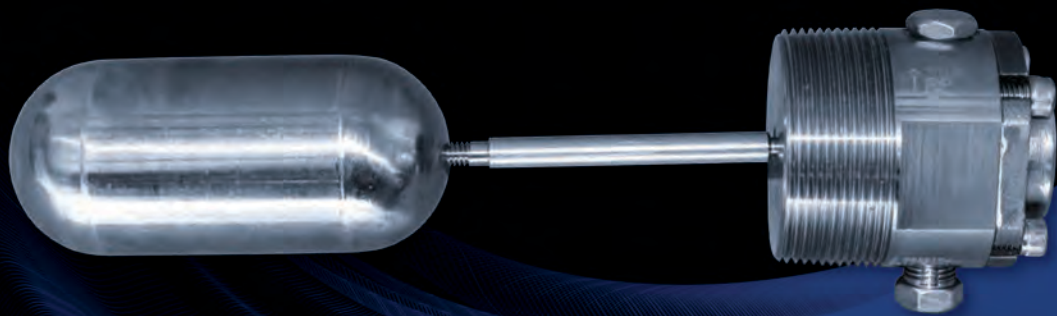


L82 PNEUMATIC



www.k-dyne.com

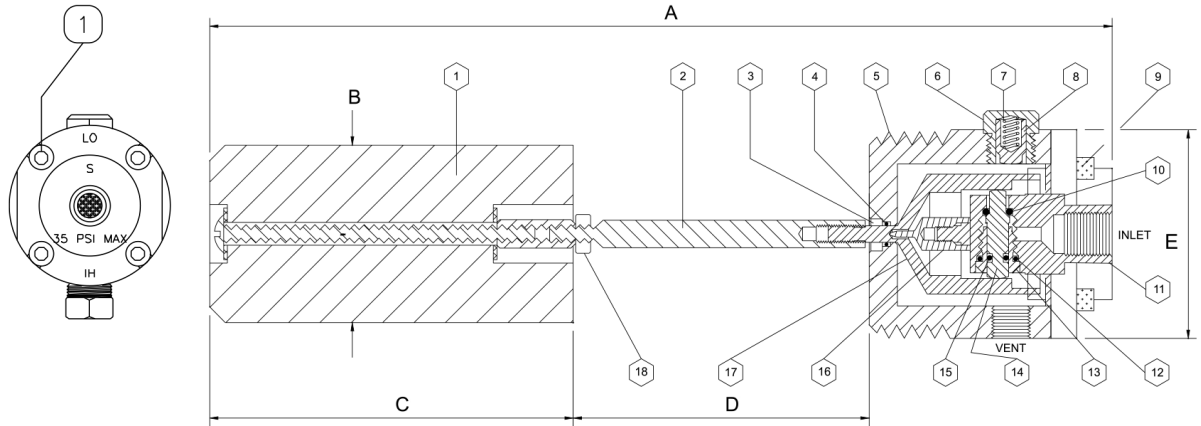
702 South Persimmon, Suite 1C
Tomball, TX 77375
P: 281.397.7099
F: 281.397.7495

MODEL L82 PNEUMATIC

The Model L82 switch incorporates a pneumatic 2-way valve, providing positive and fast system response. Its design has a non-adjustable trip point and narrow level operation range making it perfect for applications where trip point tampering is unacceptable. An internal stainless steel supply gas filter reduces maintenance requirements.

DIMENSIONS in. (mm)

A	10.06 (255.5)
B	2.00 (50)
C	4.10 (104)
D	3.25 (82.55)
Weight	3.6 Lbs (1.64 kg)



Parts List for Level Switch L82

ITEM NO.	QTY.	DESCRIPTION	MATERIAL
1	1	Displacer Assembly	Polypropylene & 18-8 SST.
2	1	Float Rod	316 SST
3	1	Body Seal Retainer	316 SST
4	1	Body Seal	Fluorocarbon
5	1	Body	316 SST
6	1	Spring Cap	316 SST
7	1	Spring	Iconel
8	1	Spring Guide	Acetal
9	4	Socket HD Cap Screw	316 SST
10	1	Valve Seat	Fluorocarbon
11	1	Valve Body	316 SST
12	1	Valve Retainer Seal	Fluorocarbon
13	1	Valve Retainer	316 SST
14	1	Valve Poppet	316 SST
15	1	Poppet Seal	Fluorosilicone
16	1	Pivot	304 SST
17	1	Cone	17-4 PH SST
18	1	Float Rod Nut	316 SST
19	-	Repair Kit	Items 4, 10, 12 & 15

SPECIFICATIONS

Maximum Test Pressure PSI (BAR) @ 100° F (37° C)	3240 (223)
Maximum Working Pressure PSI (BAR) @ 100° F (37° C)	2160 (149)
Ambient Temperature Range	-20/+180° F -29/+82° C
Maximum Process Fluid Temperature	180° F (93° C) 450° F (232° C)
Minimum Specific Gravity	0.6
Maximum Supply Pressure PSI (BAR)	50 (3.44)
Valve Cv Factor	0.042

Ordering Number L82 3 2 0 H

STANDARD	N.A.C.E.	HIGH TEMP (+180° F)	316 & 17-4 PH ST. STEEL	FLUOROCARBON	BUNA-N (180° F)	KALREZ (450° F)	POLYPROPYLENE (210° F)	316 SST DISPLACER (450° F)	2-WAY PNEUMATIC VALVE	HIGH (REVERSE ACTING)	LOW (DIRECT ACTION)	NO OPTIONS	ADJUSTABLE SPRING	NO ADJUSTMENT	FLOAT ROD 2=1.87, 6=3.25, 8=6.40, 10=12.25"	HORIZONTAL
—	N	H	3	V	B	K	P	3	2	R	D	0	A	N	X	H