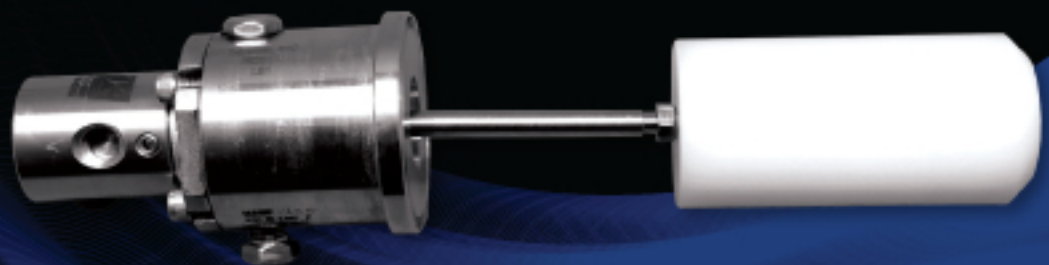


L81 PNEUMATIC

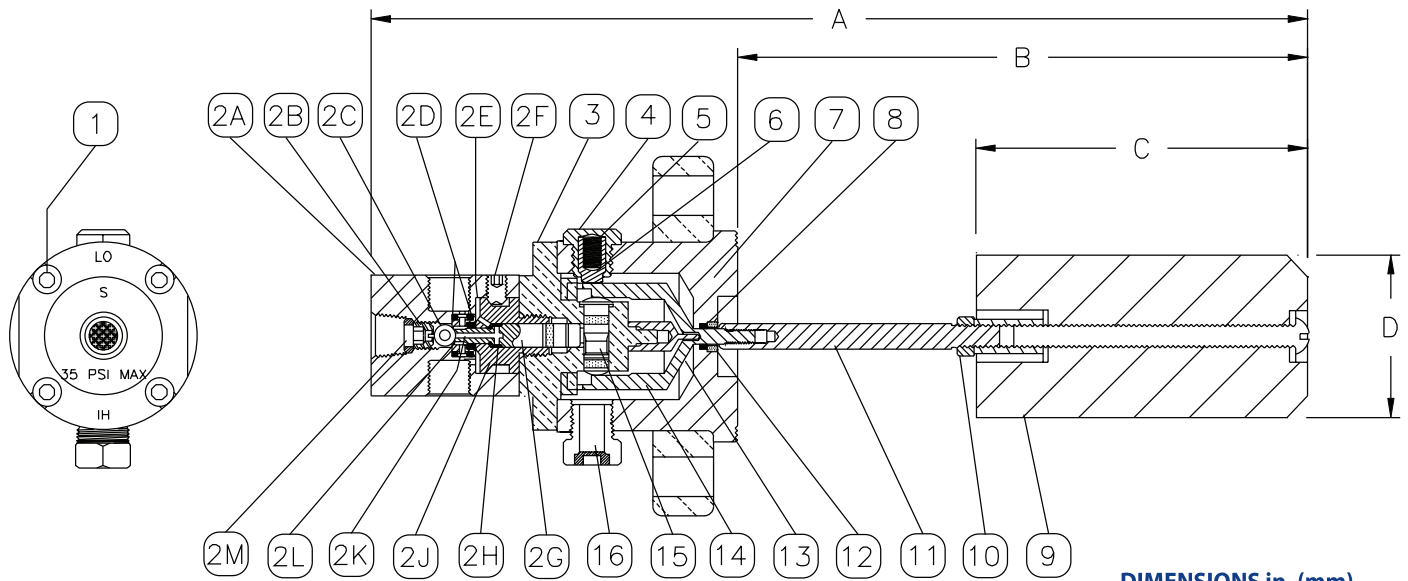


www.k-dyne.com

702 South Persimmon, Suite 1C
Tomball, TX 77375
P: 281.397.7099
F: 281.397.7495

MODEL L81 PNEUMATIC

The L81 electric level switch incorporates a slip ring mount configuration and ideal for applications where a positive process pressure seal is required. It utilizes a 3-way block and bleed valve and has an extended float rod for installation thru 2" or larger flanges.



DIMENSIONS in. (mm)

A	11.70 (297)
B	7.10 ((180)
C	4.10 (104)
D	2.00 (50)
Weight	4.1 Lbs (1.86 kg)

Parts List for Level Switch L81

ITEM NO.	QTY.	DESCRIPTION	MATERIAL	PART NO.
1	4	Socket Cap Screw	316 SST	TA-08K-0G3
2	1	Valve Assembly	Detailed Below	88-008-0B0
2A	1	Valve Body	316 SST	80-005-0A0
2B	1	Ball Retainer	18-8 St. Stl.	80-024-000
2C	1	Ball	Tungsten Carbide	BL-250-25T
2D	2	Seat O-Ring	Fluorocarbon	V0-012-75H
2E	1	Body O-Ring	Fluorocarbon	V0-019-75H
2F	3	Set Screw	18-8 St. Stl.	T9-08K-0C4
2G	1	Valve Stem Assembly	316 SST, Acetal & PTFE	80-019-000
2H	1	Valve Stem Spring	316 SST	80-035-000
2J	1	Adaptor Head	316 SST	80-004-000
2K	1	Valve Stem O-Ring	Fluorosilicone	FO-008-70T
2L	1	Seat	316 SST	80-006-000
2M	1	Filter Disk	316 SST	80-053-000
3	1	Pivot Body	316 SST	80-017-000
4	1	Spring Gap	316 SST	30-012-000
5	1	Spring	Inconel X-750	30-014-000
6	1	Spring Guide	Acetal	30-008-000
7	1	Flanged Body	316 SST	31-002-0A0
8	1	Body Seal	Fluorocarbon	V0-008-75H
9	1	Displacer Assembly	Polypropylene & 18-8 SST	30-016-000
10	1	Hex Nut	316 SST	T6-08K-073
11	1	Float Rod	316 SST	30-005-0A0
12	1	Seal Retainer	316 SST	30-007-0A0
13	1	Pivot	17-4 PH St. Stl.	30-079-000
14	1	Cone	17-4 PH St. Stl.	30-085-000
15	1	Transverse Assembly	316 SST & PTFE	88-043-000
16	1	Body Vent	316 SST & Fluorocarbon	99-010-000
17	---	Repair Kit	Items: 2C,D,E,H,K,M,8,13	80-020-000

SPECIFICATIONS

Maximum Test Pressure PSI (BAR) @ 100° F (37° C)	3240 (223)
Maximum Working Pressure PSI (BAR) @ 100° F (37° C)	2160 (149)
Ambient Temperature Range	-20/+180° F -29/+82° C
Maximum Process Fluid Temperature	180° F (93° C)
Minimum Specific Gravity	0.6
Supply Pressure PSI (BAR)	35 (2.41)
Valve Cv Factor	0.042

Ordering Number L81

STANDARD	N.A.C.E.	316 & 17-4 PH ST. STEEL	FLUOROCARBON	BUNA-N (180° F)	KALREZ (450° F)	POLYPROPYLENE (210° F)	316 SST DISPLACER (450° F)	3-WAY PNEUMATIC VALVE	LOW (DIRECT ACTING)	HIGH (REVERSE ACTING)	NO OPTIONS	ADJUSTABLE SPRING	NO ADJUSTMENT	FLOAT ROD 2=1.87, 6=3.25, 8=6.40	HORIZONTAL
--	N	3	V	B	K	P	3	P	D	R	O	A	N	X	H