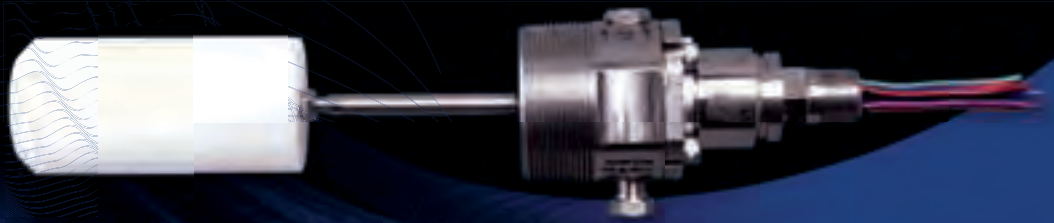


**L80 ELECTRIC**



[www.k-dyne.com](http://www.k-dyne.com)

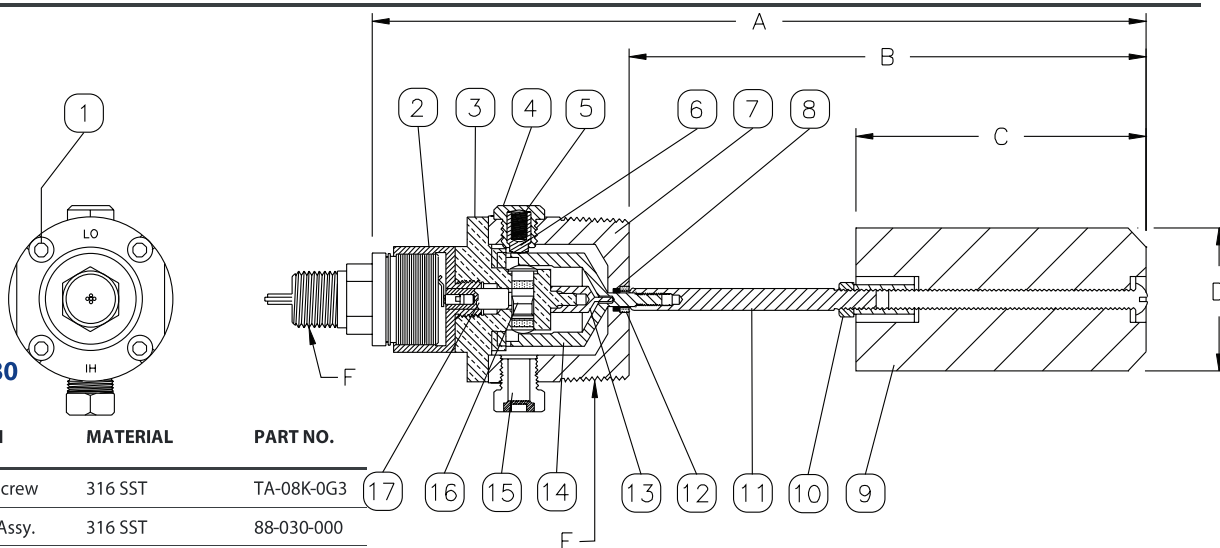
702 South Persimmon, Suite 1C  
Tomball, TX 77375  
P: 281.397.7099  
F: 281.397.7495

# MODEL L80 ELECTRIC

The Model L80 switch incorporates a 2" NPT thread mounting and an explosion proof SPDT or DPDT snap acting dry contact switch. The design has a non-adjustable trip point and narrow level operation range making it perfect for applications where trip point tampering is unacceptable. Factory installed explosion proof junction boxes with terminals are available.

## Parts List for Level Switch L80

ITEM NO.	QTY.	DESCRIPTION	MATERIAL	PART NO.
1	4	Socket Cap Screw	316 SST	TA-08K-0G3
2	1	DPDT/SPDT Assy.	316 SST	88-030-000
3	1	Pivot Body	316 SST	80-017-000
4	1	Spring Cap	316 SST	30-012-000
5	1	Spring	Inconel X-750	30-014-000
6	1	Spring Guide	Acetal	30-008-000
7	1	2" NPT Body	316 SST	30-001-NB0
8	1	Body Seal	Fluorocarbon	VO-008-75H
9	1	Displacer Assembly	Polypropylene or 316SST	30-016-000/ 30-068-000
9A	1	Displacer Assembly	316 SST	30-068-000
10	1	Hex Nut	316 SST	TB-08K-073
11	1	Float Rod	316 SST	30-005-0A0
12	1	Seal Retainer	316 SST	30-007-0A0
13	1	Pivot	17-4 PH St. Stl.	30-079-000
14	1	Cone	17-4 PH St. Stl.	30-085-000
15	1	Body Vent	316 SST & Fluorocarbon	99-010-000
16	1	Transverse Rod Assy.	316 SST & PTFE	88-043-000
17	1	Push Rod Assembly	Acetal & 18-8 S. Stl.	88-020-000
18	---	Repair Kit	Items: 8 & 13	88-019-000



	LOCATION	ELECTRICAL
<b>SWITCH</b>	U.L. <sup>TM</sup> rated dry contact snap switch for hazardous locations Class I groups A, B, C & D Class II groups E, F & G: Heretically Sealed, NEMA 7 & 9	U.L. <sup>TM</sup> rated 11 Amps 1/4 HP @ 125/250 VAC.; 5 Amps Res./3 Amps Ind. @ 28 VDC.; .5 Amps Res./25 Amps Ind @ 125 VDC 18 AWG x 18" leads

## SPECIFICATIONS

Maximum Test Pressure PSI (BAR) @ 100° F (37° C)	3240 (223)
Maximum Working Pressure PSI (BAR) @ 100° F (37° C)	2160 (149)
Ambient Temperature Range	-20/+165° F -29/+74° C
Maximum Process Fluid Temperature	180° F (93° C) 450° F (232° C)
Minimum Specific Gravity	0.6

## DIMENSIONS in. (mm)

A	11.60 (294)
B	7.35 (186)
C	4.10 (104)
D	2.00 (51)
E	2.37 (60)
F	1.50 (38)
Weight	3.6 Lbs (1.64 kg)

## Ordering Number L80

Ordering Number	Description
—	STANDARD
N	N.A.C.E.
H	HIGH TEMP (+180° F)
3	316 & 17-4 PH ST. STEEL
V	FLUOROCARBON
B	BUNA-N (180° F)
K	KALREZ (450° F)
P	POLYPROPYLENE (210° F)
3	316 SST DISPLACER (450° F)
S	SPDT SWITCH
D	DPDT SWITCH
R	HIGH (REVERSE ACTING)
0	NO OPTIONS
C	EXPLOSION PROOF JUNCTION BOX
A	ADJUSTABLE SPRING
0	NO ADJUSTMENT
X	FLOAT ROD 2=1.87, 6=.325, 8=6.40
H	HORIZONTAL